



Sheffield
HOUSING COMPANY

NEWS

January 2022



Partnership delivers 1,000th home

A four bedroomed property at the Eclipse development, in the Manor area of the city, is the 1,000th to be completed by Sheffield Housing Company (SHC).

It marks a major milestone for the partnership, established in 2011, which has also created over 800 jobs, 75 apprenticeships and spent more than £80m with construction businesses in the South Yorkshire region.

Project Director, Steve Birch, said: “Despite the challenges presented by Covid-19, we are incredibly pleased to have reached this major milestone on our tenth development site. It is testament to the hard work and commitment of all the teams involved that we are celebrating the achievement as we prepare to start construction on five more sites in the coming months.”

Looking ahead, SHC aims to complete up to 2,300 properties on 23 sites by the end of 2027 – delivering further economic stimulation, job creation and community investment for Sheffield.

A word from Steve

“Welcome to the latest edition of SHC News! It will provide details on a flurry of post lockdown activity, which will deliver over 400 modern, new homes in three of the city’s neighbourhoods.

“This includes 358 at Manor - 210 off Harborough Avenue, opposite the Eclipse site; 47 at Corker Bottoms, off Harborough Rise and 101 at Pennine Village, off Manor Lane. In addition, there will be 35 new homes including 16 apartments in Norfolk Park, off Park Grange Road, and 44 houses off Lytton Road in Parson Cross.



Steve Birch

“House styles will include two to four bedroomed properties, with the majority expected to be available for private sale.

“This all comes after our partnership celebrated the construction of its 1,000th home since building began in 2011.

“SHC is Sheffield City Council’s joint venture development company with private sector partners Keepmoat and Great Places Housing Group. Along with EQUANS, Esh and Sigma Capital Group Limited, it is providing homes for sale, shared ownership and affordable and private rent across the city.”

Steve

Steve Birch, Project Director with Sheffield Housing Company.



www.sheffieldhousingcompany.co.uk

Email: customerservices@sheffieldhousingcompany.co.uk

Tel: 0114 2730119

Twitter: @Sheff_HousingCo

Facebook: @SheffieldHousingCompany

LinkedIn: <https://www.linkedin.com/company/sheffield-housing-company-limited>



Look out for Art to the Park

An innovative arts programme, developed during lockdown, is set to make its mark in Sheffield, encouraging people to enjoy the superb outdoor spaces the city offers.

Funded by SHC, the £28,000 initiative will help transform green open space adjacent to Cutler's View, Bluestones and East Hill Gardens housing developments in the Norfolk Park area.

Andrew Skelton, Public Art Officer with Sheffield City Council, said: "The aim is to encourage people to make the most of the outdoor public space, the natural environment and the connecting routes, walk ways and cycle paths it offers."

We hope people will be able to further discover and appreciate the beauty and diversity of their city."



A dozen artists were asked to submit their ideas and Howard Bowcott, from North Wales, was chosen after a rigorous selection process. He said: "The idea is to create artwork installations through the new housing that lead people towards the open spaces of the park."

After engaging public interest online, with the help of his daughter Anya Sirina, he has used the feedback to develop a series of way markers, made from Pennine sandstone. They are not carved but formed from layers or strata of smaller pieces of stone.

Howard added: "The pillars are inspired by the shapes and structures of leaves and they encourage the viewer to look at the details of nature all around them."

They explore the relationship between the built form of the urban environment and the organic natural world."

Howard at work on one of the sculptures.



New construction partner to build at Parson Cross

Leading regeneration and housing specialist, Esh Construction, has been appointed to deliver 44 new two, three and four bedroomed homes at Parson Cross.

With a project value of £5.4 million, the new properties will be built at three separate sites - Lytton Road, Lytton Crescent and Buchanan Road.

Currently proposed for private sale, the new homes will help revitalise an area of land which has been vacant since the demolition of old housing stock over 20 years ago.



(L-R) Steve Birch, Cllr. Mike Chaplin, Cllr. Paul Wood, and Stuart Leslie.

Steve Birch, said: “It is great to forge new working relationships to help drive and deliver projects as our programme of work increases. Esh Construction is well placed to create these developments with significant skills and expertise in this area.”

Stuart Leslie, Divisional Director at Esh Construction, added: “We are delighted to have been awarded this contract and to be working with SHC for the first time. We will maximise the social and economic benefit for the community by supporting local initiatives, employing local and buying local – a core value which is very much aligned to that of SHC.”

Councillor Paul Wood, Executive Member for Housing, Roads and Waste Management at Sheffield City Council said: “This is another important step in Sheffield’s journey towards providing much needed new homes for Sheffield families. We’re very pleased to see these plans for this area of the city and it’s so good to see that currently underused land will be used for this development.”

Work started on site in summer 2021 with the first properties expected to be completed in 2023

Plans for new Malthouses homes

Plans have been granted for 73 new homes at Malthouses, Parson Cross.

Formerly occupied by 1950s pre-fabricated homes that were demolished over a decade ago, the new development will offer a mixture of two to four bedroomed homes. At present these are all expected to be for private sale to address a shortfall in the neighbourhood, but will remain under review to meet local housing need.

More information can be found in the developments section on the website: www.sheffieldhousingcompany.co.uk whilst the application is also available to view by visiting www.sheffield.gov.uk and searching reference number - 21/02598/FUL in the planning section.



Steve Birch and Cllr. Tony Damms

With planning being approved, it completes a memorable circle for two men involved in removing the old properties. Steve Birch, then working with the council's housing department, was involved with local Cllr. Tony Damms, in finding better homes for those living in the ageing properties.

Whilst Cllr. Damms still represents the Southey Ward on Sheffield City Council, Steve is now Project Director with SHC. He said: "This area is significant to me as I spent a lot of time supporting the residents who lived in the prefabricated properties to find new, suitable homes. It is rewarding to now be involved in plans which will help to revive the area and hopefully bring much needed housing to this part of Parson Cross."

Award winning partnership completes two projects

A recently completed development has won one regional award and reached the finals of a national competition.

Prince's Gardens, near Manor Top, which comprises 163 homes for private rent and 93 for sale, was named Public Private Collaboration of the year at the Yorkshire 2020 Insider Property Industry Awards and was shortlisted as a finalist for the Neighbourhood Transformation Accolade, at the UK Housing Awards 2021.



Sheffield City Council's Deputy Lord Mayor and Mahor Castle Ward Member, Councillor Sioned-Mair Richards, chats with Steve Birch during a visit to Prince's Gardens.

Together with East Hill Gardens, at Norfolk Park – which offers 58 homes for private rent and 19 for sale - Prince's Gardens was developed in partnership with regeneration specialists EQUANS (formerly ENGIE) and for Sigma's private rental brand, Simple Life Homes.

Combined, the projects represent a £43m housing investment, which also supported job creation and training initiatives.

With support from the Department of Education, Sheffield City Council, Keepmoat Homes and EQUANS, around 400 young people got a taste of the world of construction, through the Building Block project.

Participants sat a Construction Skills Certification Scheme test before completing a site based placement which helped about 200 of them go on to secure long term employment.

In addition, Sigma's Simple Life donated £13,000 to local primary school, St Theresa's, which helped to build and stock a new library and establish a relaxation and sensory room for the children.

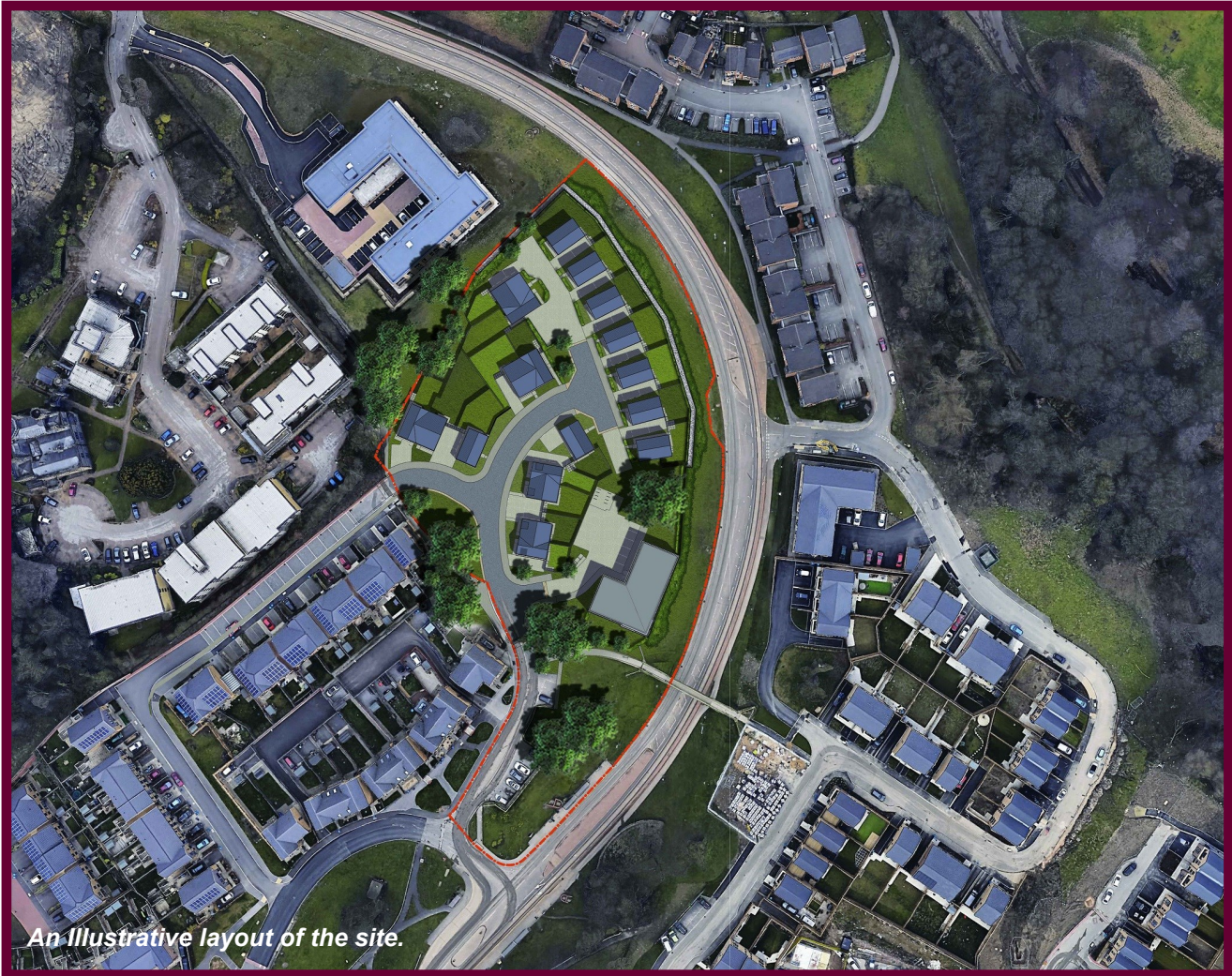


Above: Homes at Prince's Gardens



Above: St Theresa's Library

Eco homes on the horizon



Increasingly – in addition to quality and space standards - the green credentials of SHC homes are attracting new residents.

A prime example is a £5.5m initiative, being delivered with regeneration specialist EQUANS, at Norfolk Park.

The development - comprising 19 three and four bedroomed houses and 16 two bedroomed apartments - will feature electronic vehicle charging points and solar-photovoltaic panels. These will help residents live a greener lifestyle and Sheffield City Council move towards its target of becoming a zero carbon city by 2030.

Nathan Brough, Regional Director at EQUANS, said: “It is great to be working alongside SHC once more. Our proven partnership is making a big difference in transforming housing across Sheffield and the eco-credentials and superior quality of these new homes really set the standard for future housing across the city.”

Steve Birch, Project Director with SHC, added: “This is an exciting project creating homes which have a number of green credentials that benefit the buyer, the city and the wider environment in a city which is one of the greenest in the UK.”